



# Nantucket

# Pine Tip Moth

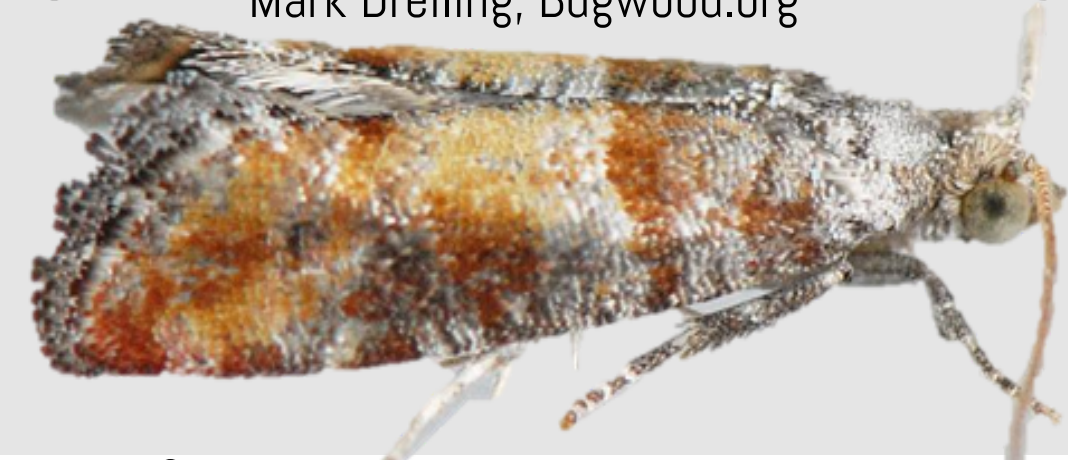
Family: Tortricidae  
Species: *Rhyacionia frustrana*

## ◀ Moth Facts ▶

- This moth was named in 1880 when they were found infesting pitch pine on Nantucket Island, Massachusetts
- Larvae bore into shoots of many pine species, which kills the shoots, particularly the topmost shoot
- NPTM feeding can cause stem form issues in the first few years of pine growth, which is an economic problem in young pine plantations (1-5 years)
- Adult moths are most active right before dusk

0mm 8mm

Mark Dreiling, Bugwood.org



## Appearance

Wing pattern color includes patches of copper and orange separated by irregular gray and white bands

## Damage to Shoots

Elizabeth McCarty, University of Georgia



## Adult Moth

James A. Richmond, USDA Forest Service, Bugwood.org



## ◀ Life Cycle ▶

### Adult//

Female moths release sex pheromones to attract the males, leading to egg fertilization.

### Egg//

Females lay fertilized eggs one by one at the base of a pine needle or on the bark of a branch

Pine tip moth can repeat this cycle anywhere from 2 to 5 times a year

### Pupa//

Pupae are cased within a previously infested shoot. Overwintering occurs with pupae from the last generation of the year.

### Larvae//

There are five phases within this stage. Larvae damage the shoots, particularly the topmost shoot, which can lead to stem form issues